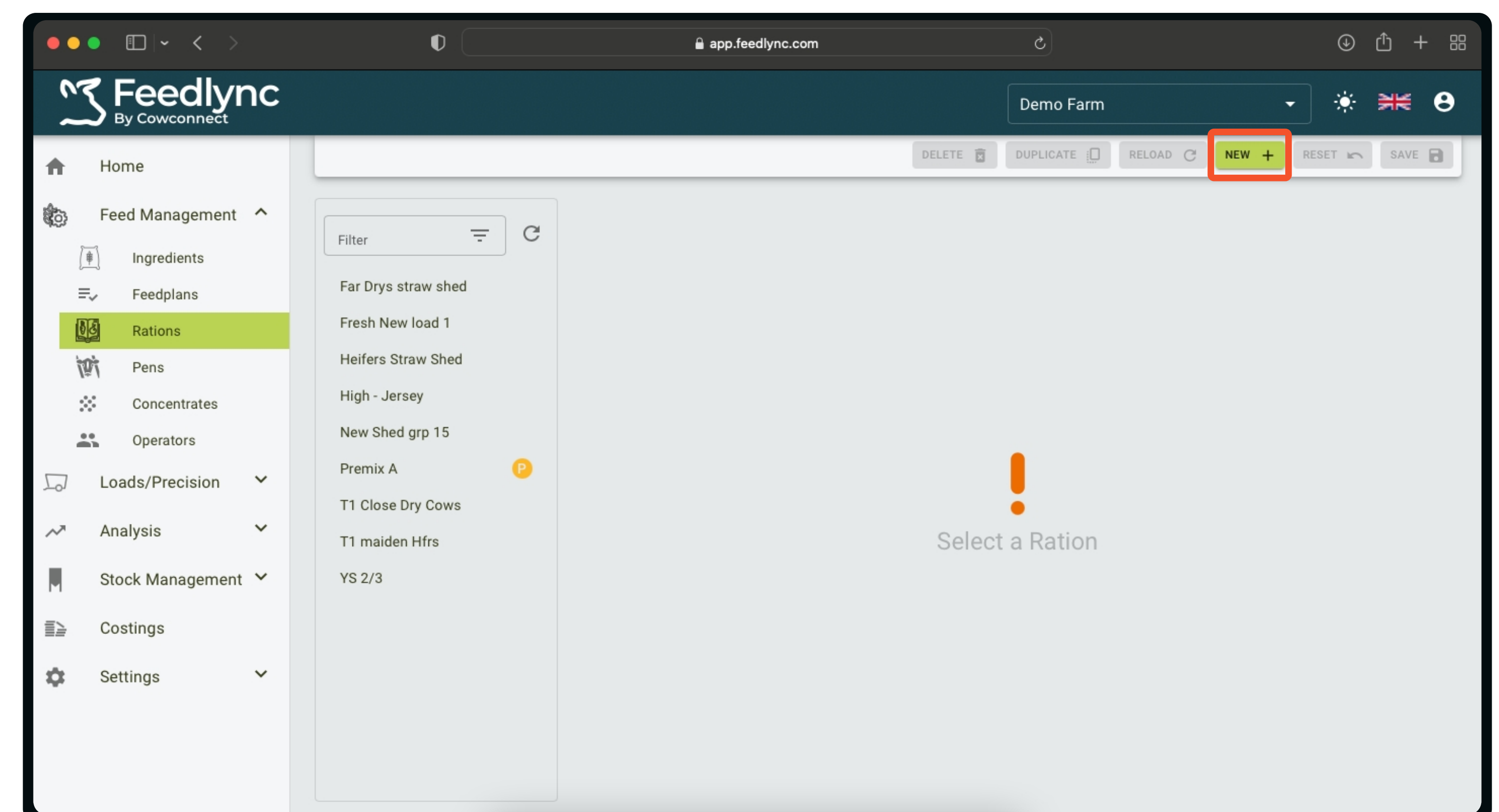


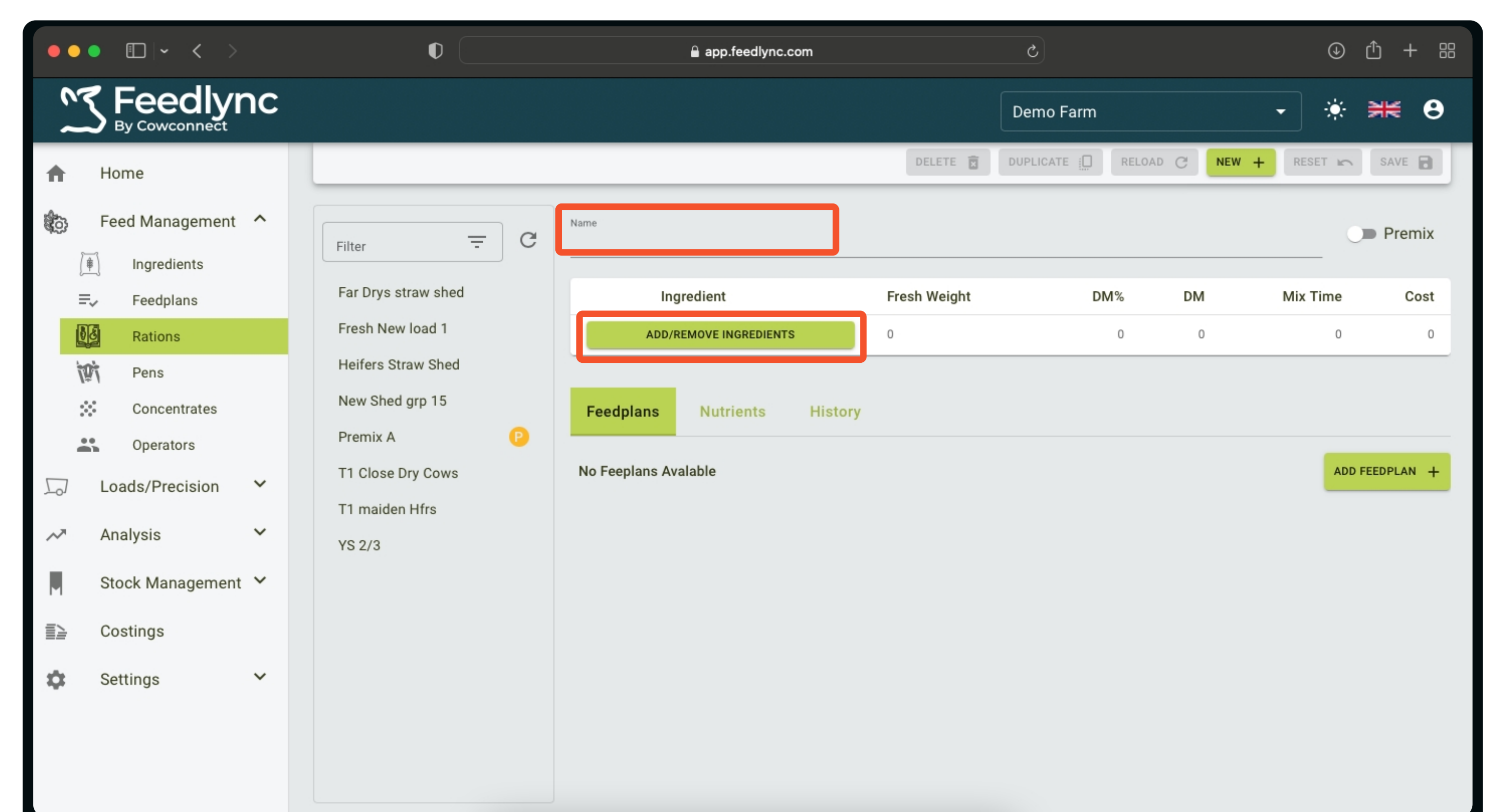
# How to create and edit rations?

1. Log in on a desktop device with your credentials to [app.feedlync.com](https://app.feedlync.com).

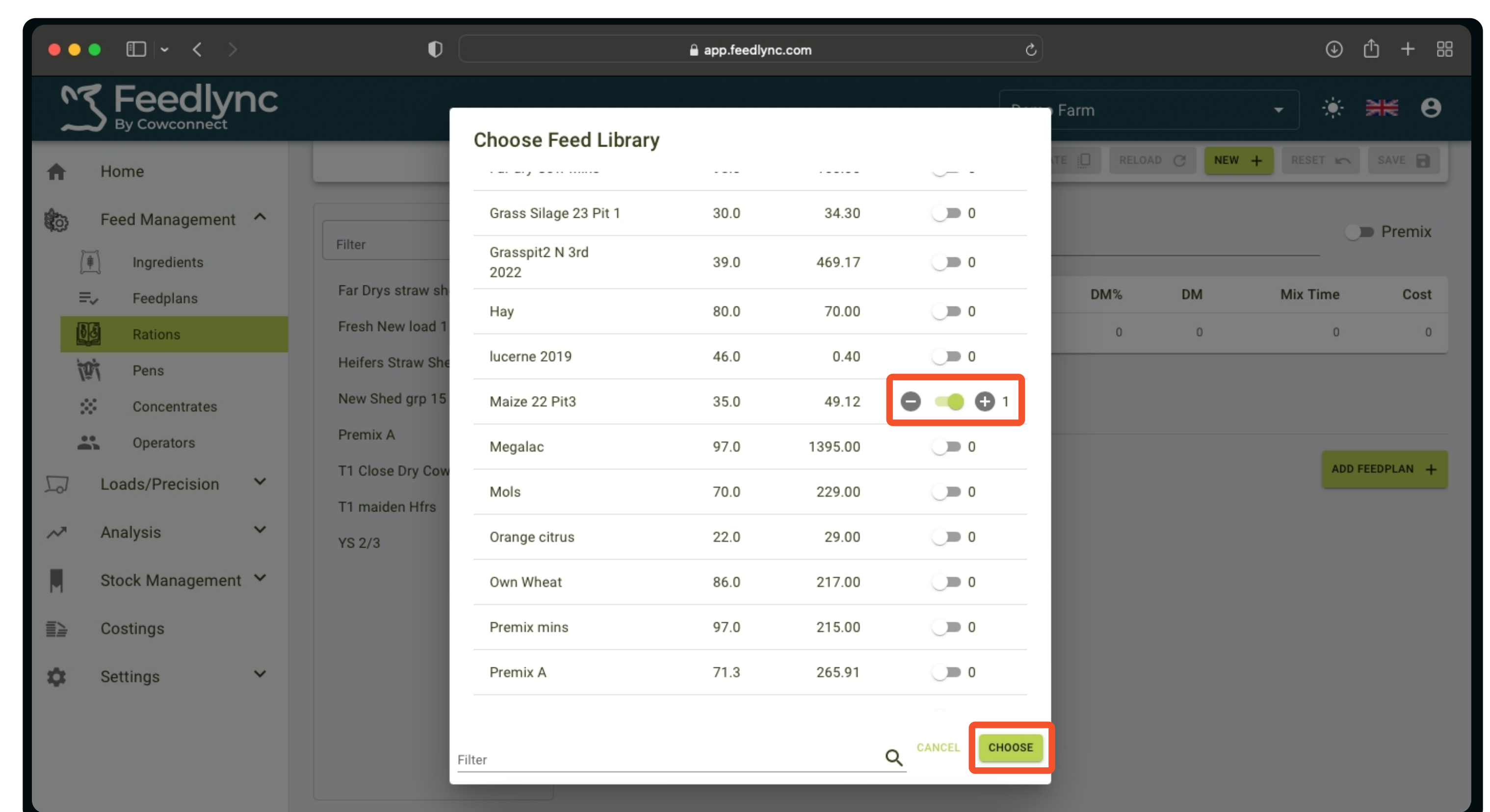
In the side navigation click Feed Management, and from the unfolding items choose Rations. To register a new ration, in the top right, select New +.



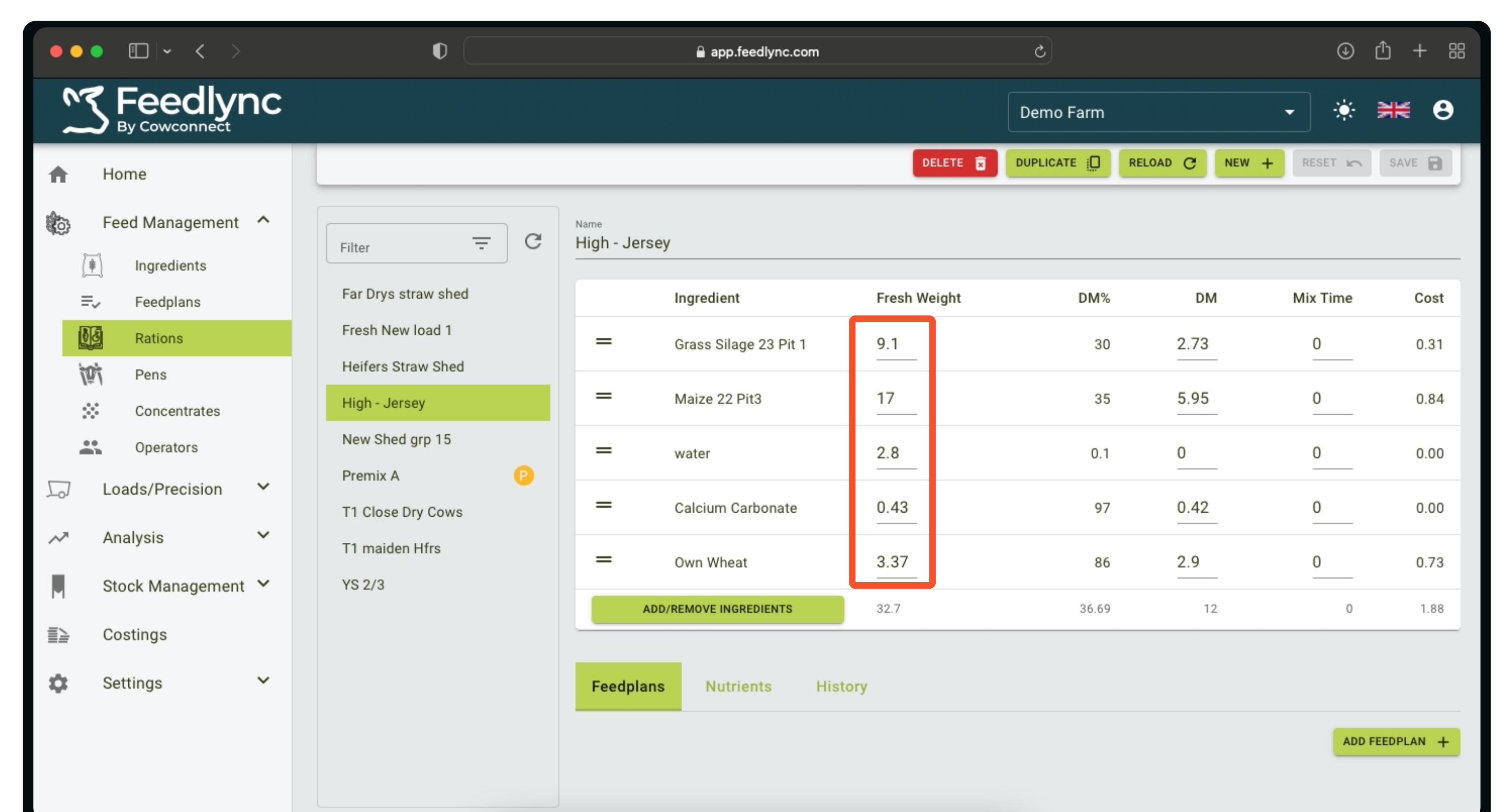
2. First, give a name to the ration, then click the Add/Remove Ingredients button.



3. Select the relevant ingredients from the list, by turning on the slider. To finalise the list, click "Choose".



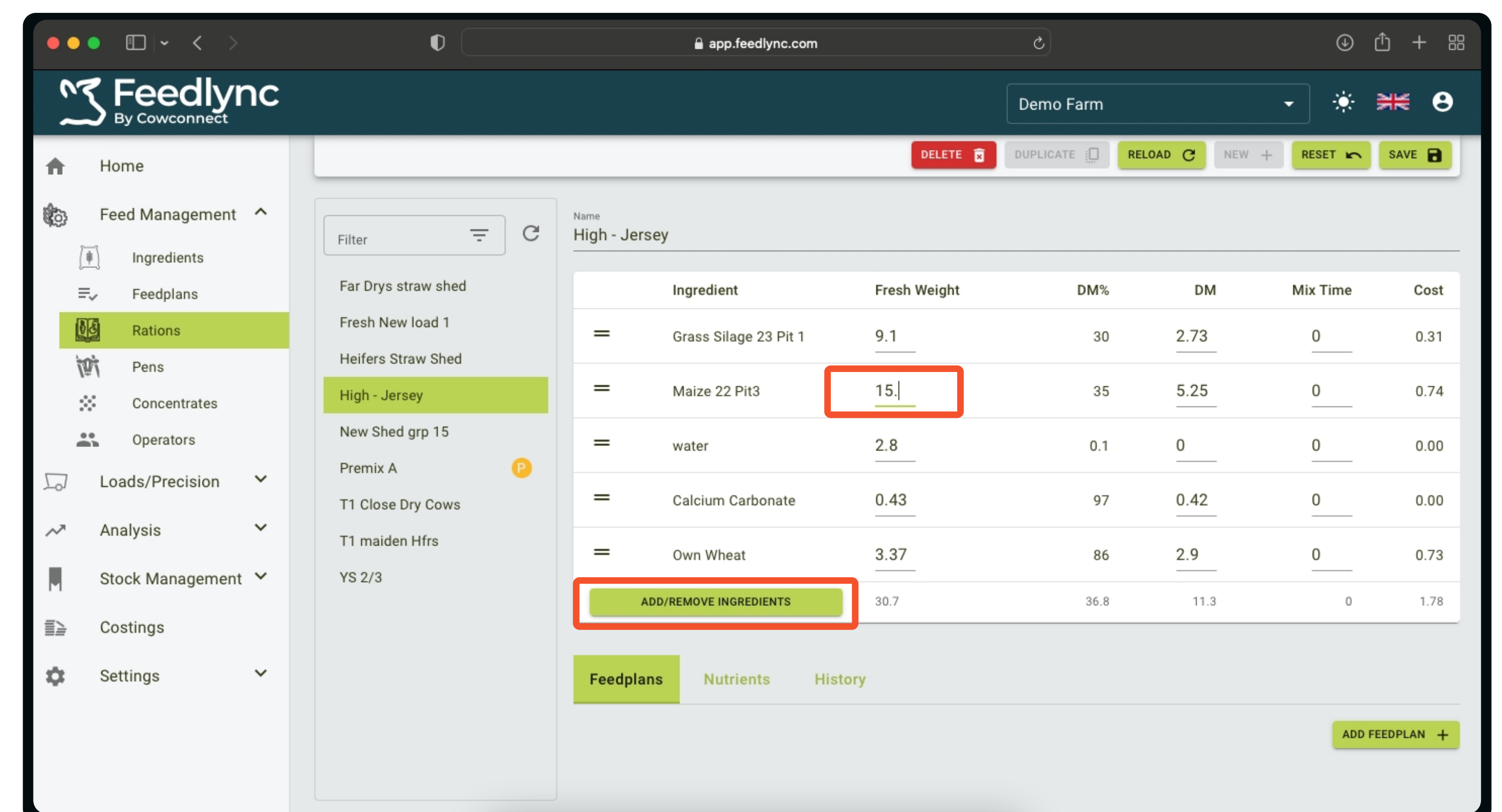
4. Add Fresh weight for each ingredient. The amount refers in kilograms or pounds per animal depending on your farm settings.





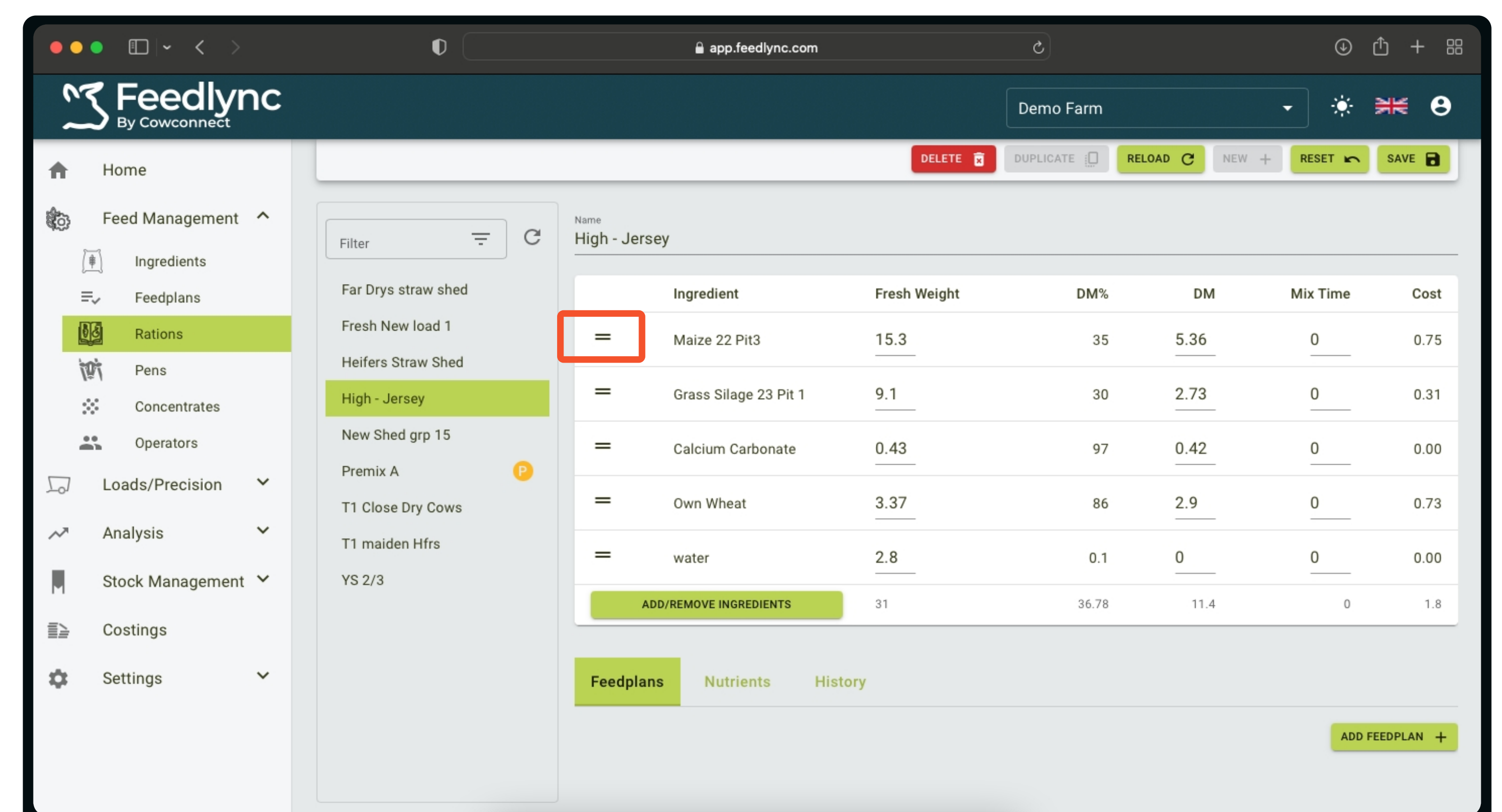
# How to create and edit rations?

5. Edit components by clicking the weight field next to the ingredient's name, then write the desired amount.  
To remove an ingredient or add a new one, click on Add/Remove Ingredients.

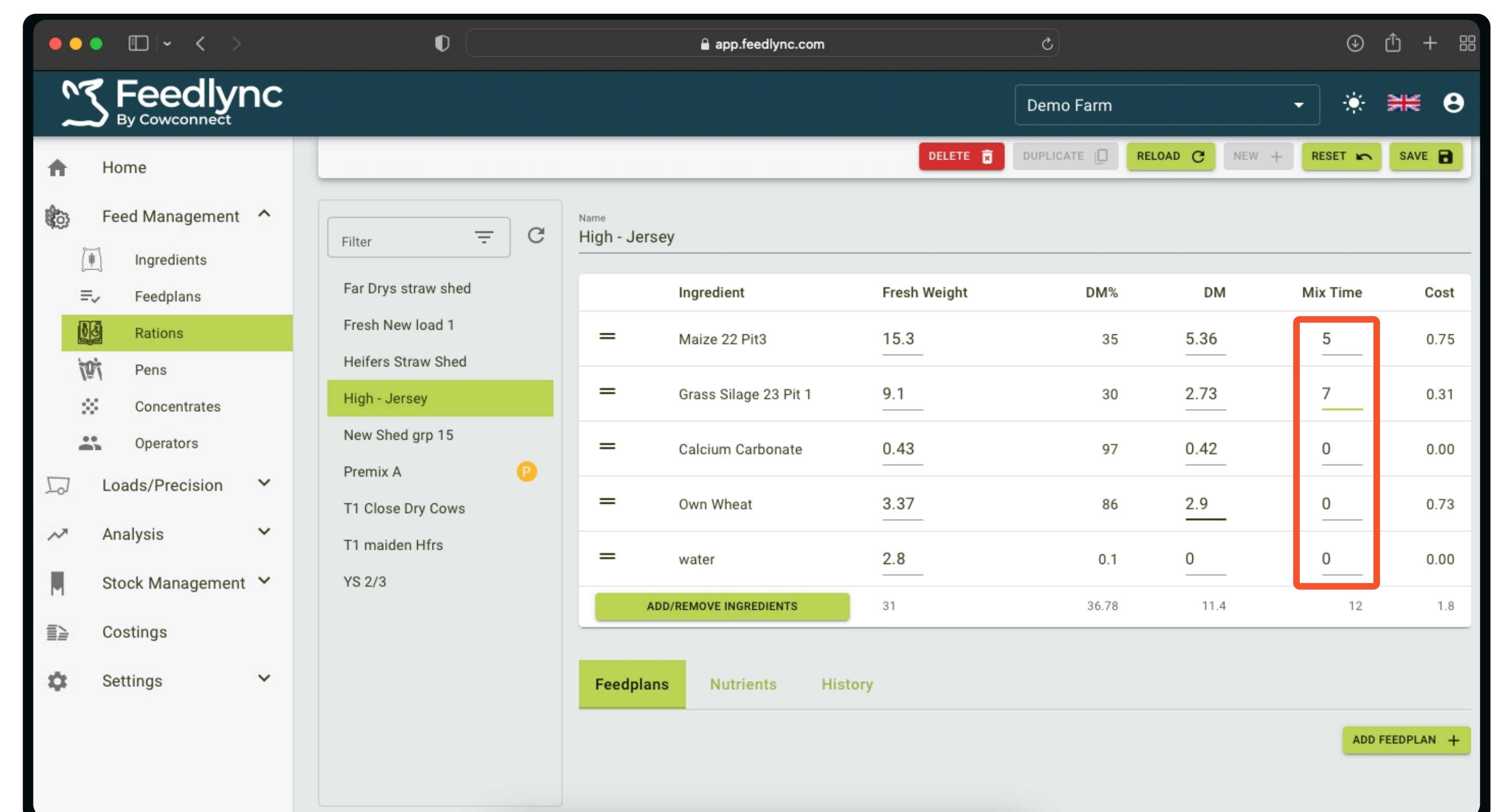


6. Change the order of ingredients on the list  
By holding onto the two lines and dragging the item up or down the list.

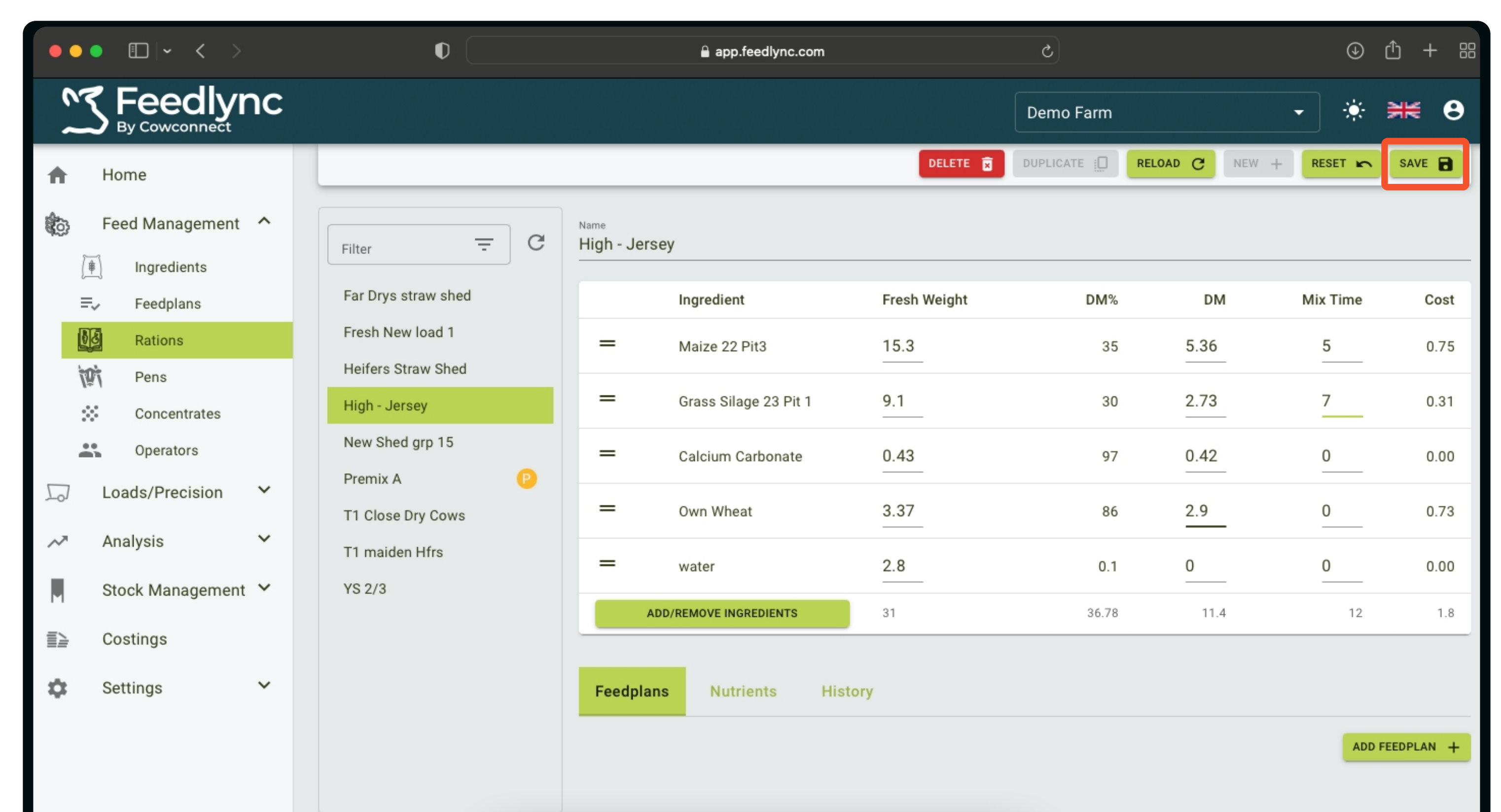
We recommend to creating an order on the list, which follows the order how the ingredients will be loaded into the mixer.



7. Mix time can be assigned to each Ingredient by clicking the field, and adding the number of minutes for the mixing.



8. When you finished setting up the ration, press save in the top navigation.



Contact

[www.feedlync.com](http://www.feedlync.com)

[support@feedlync.com](mailto:support@feedlync.com)

US (+1 ) 414 939 6871

UK (+44 ) 20 3966 90 63

DK (+45 ) 32 25 89 56