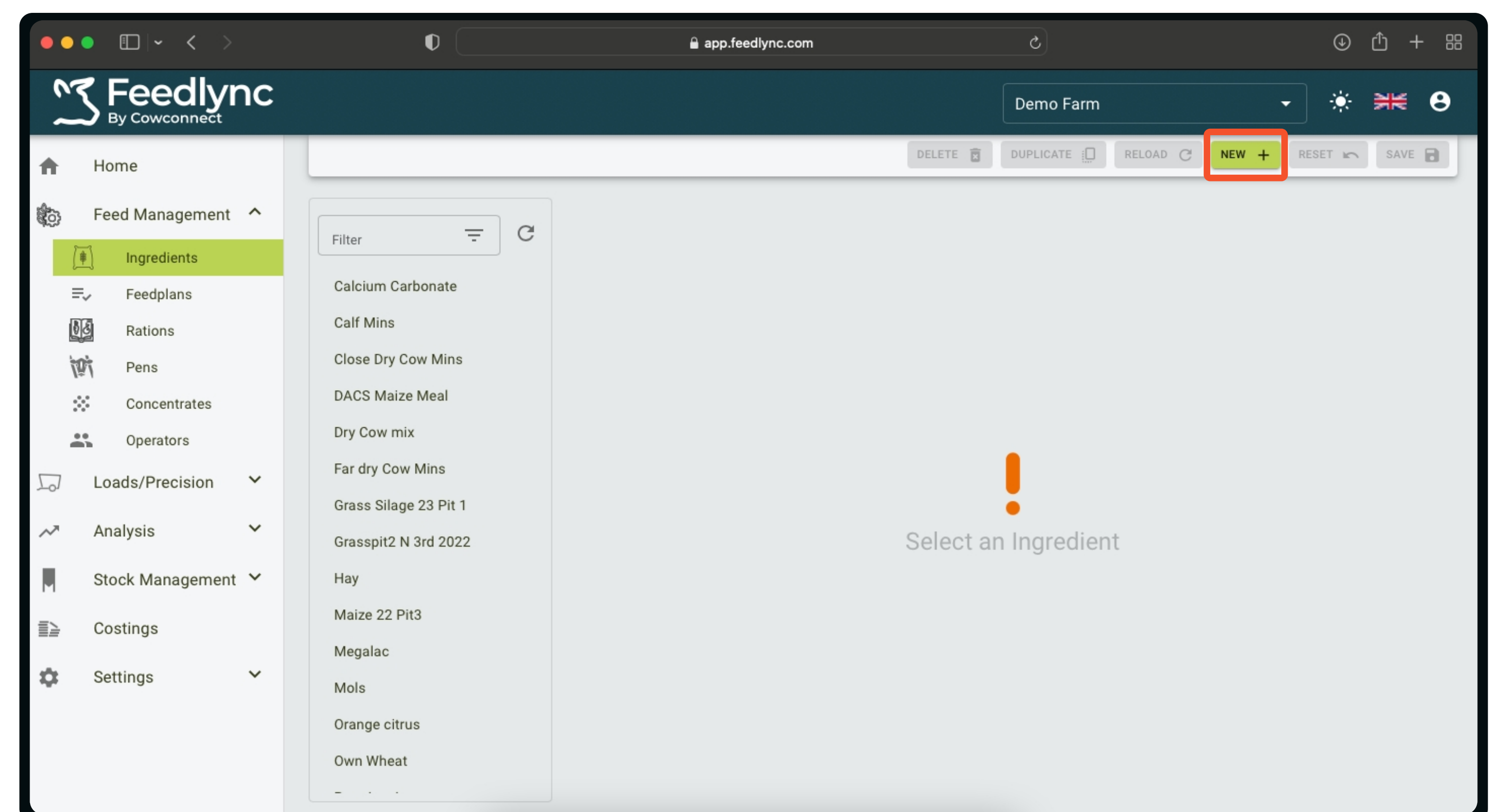


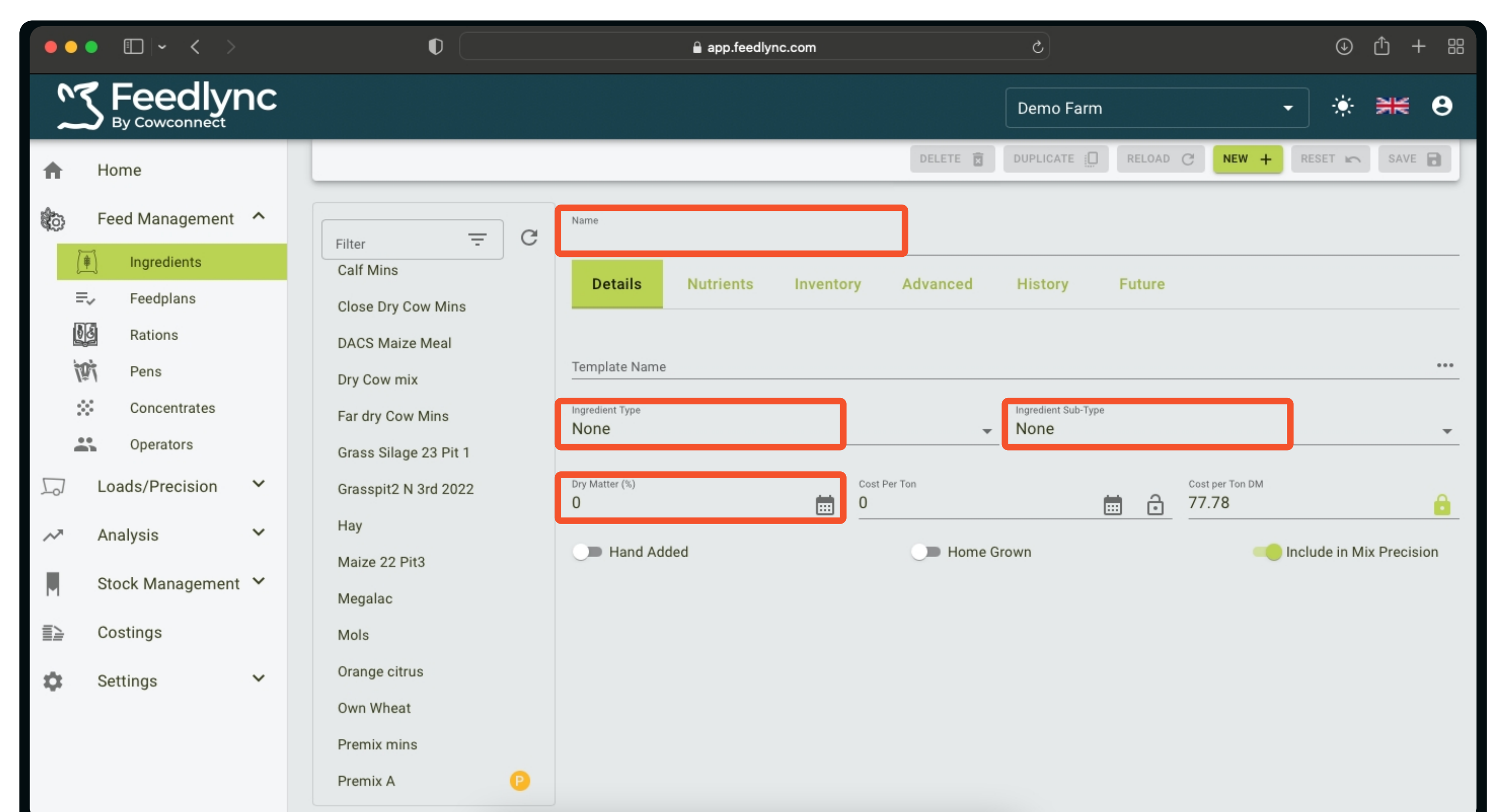
How to add an ingredient?

1. Log in on a desktop device with your credentials to app.feedlync.com.
In the side navigation click Feed Management, and from the unfolding items choose Ingredients. To register a new ingredient, in the top right, select New +.

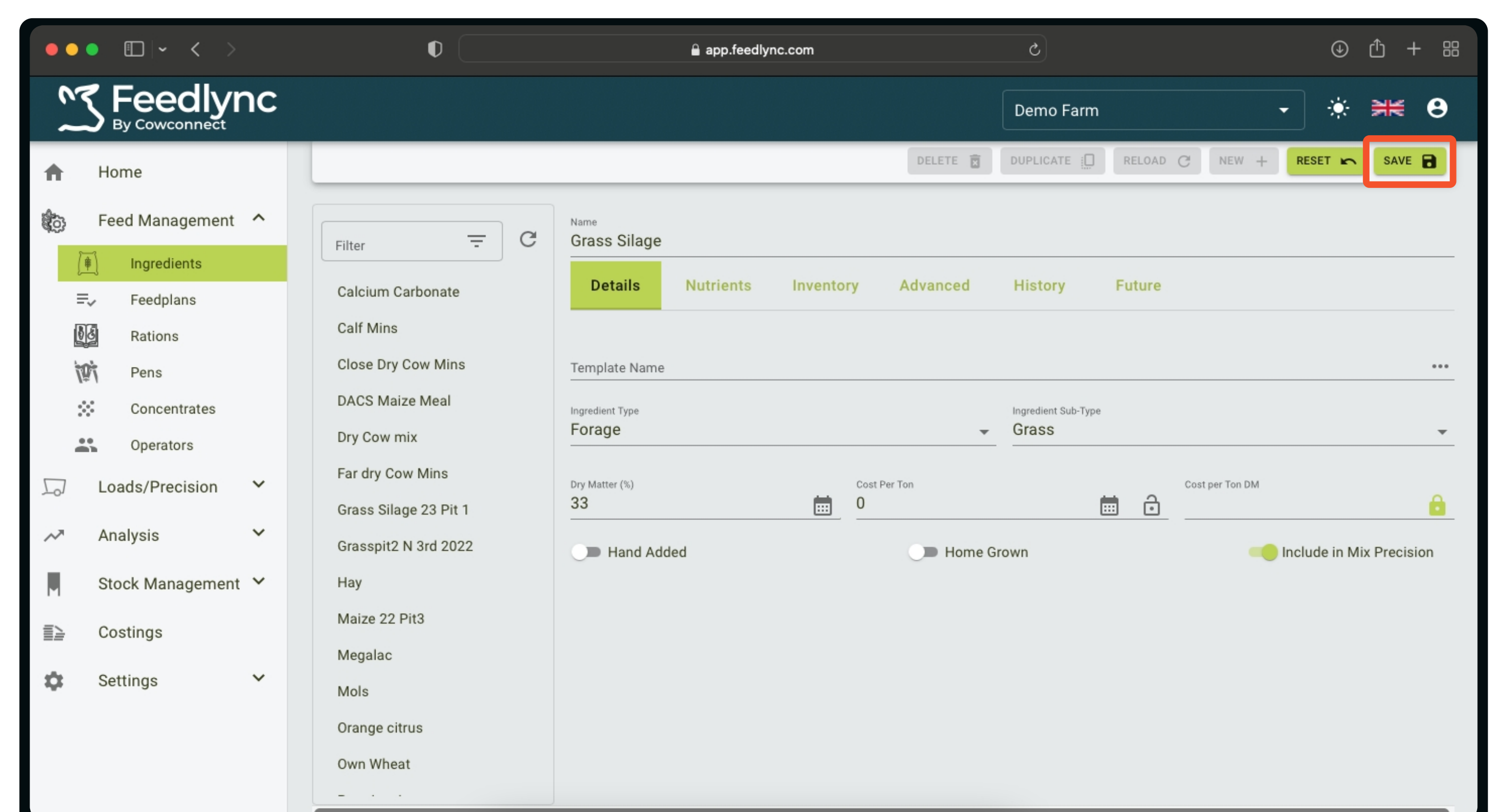


2. First, name the ingredient.

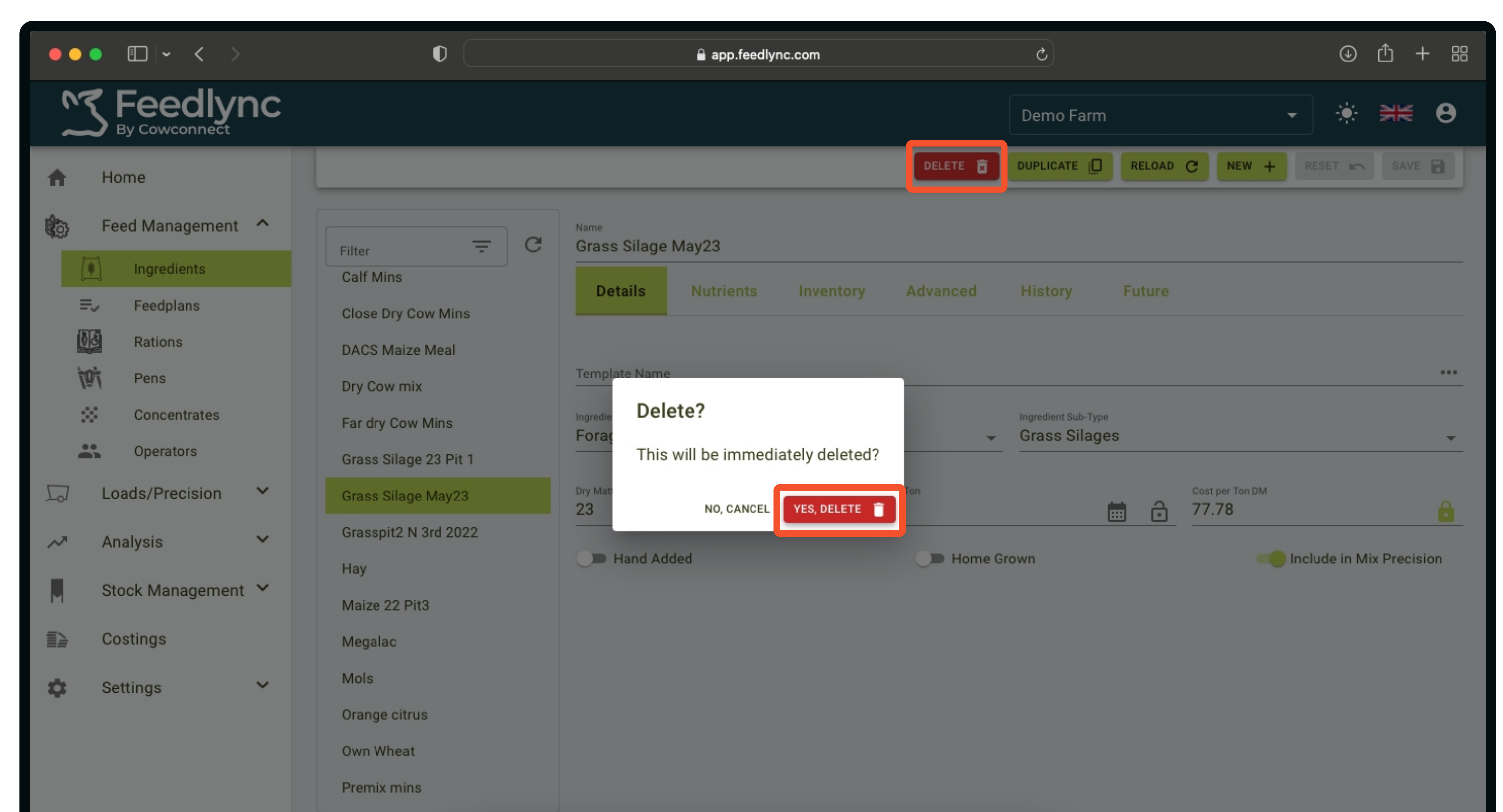
The following fields are required:
Ingredient-type,
Ingredient sub-type,
Dry-matter.



3. When all the details are added, create the ingredient by clicking Save in the upper right corner.



4. To remove an ingredient, select the item on the list, and click the delete button. Confirm the removal.



How to add ingredients?

1. Nutrients

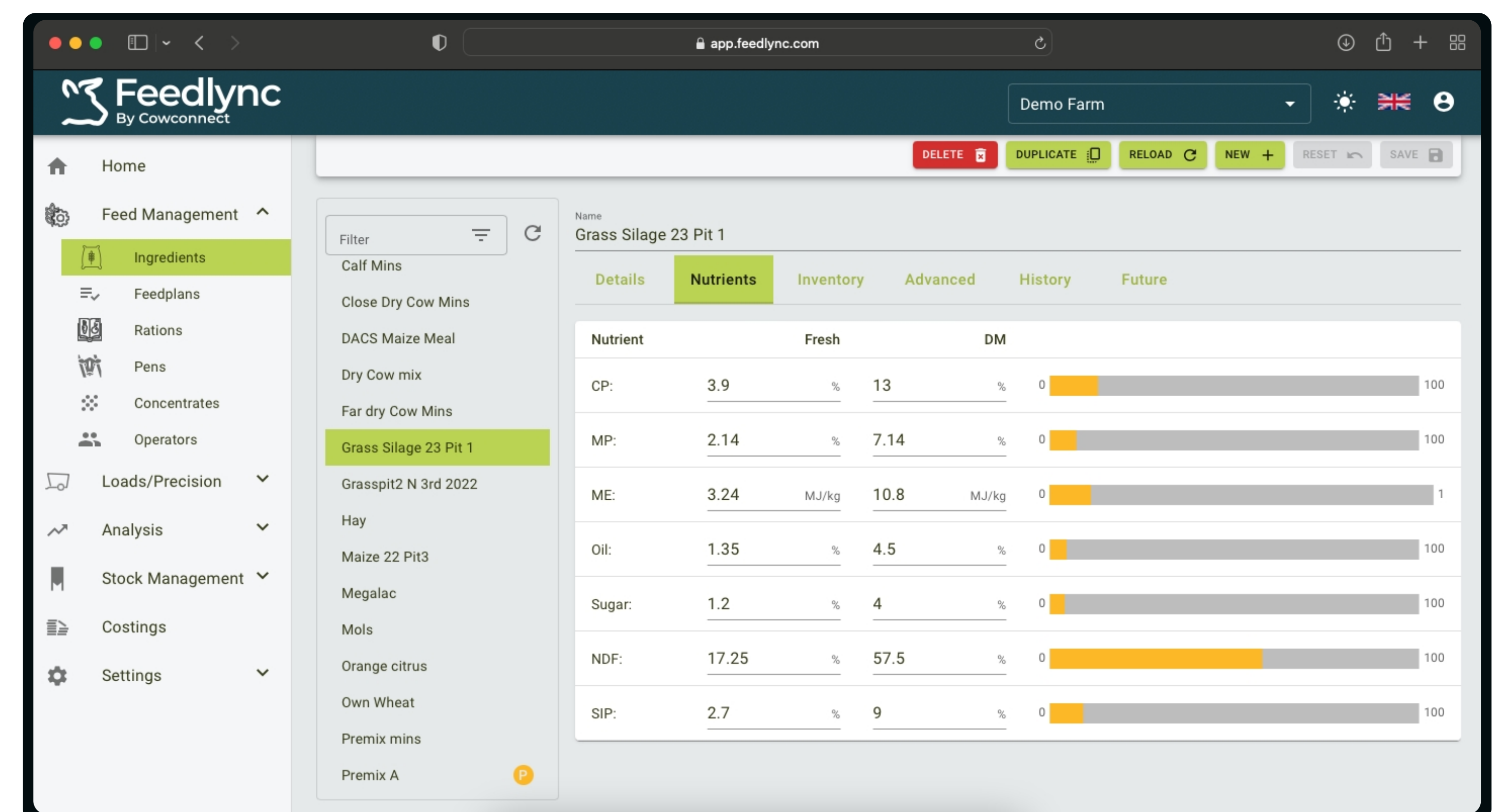
What

Is this segment about

And

How does it

Work



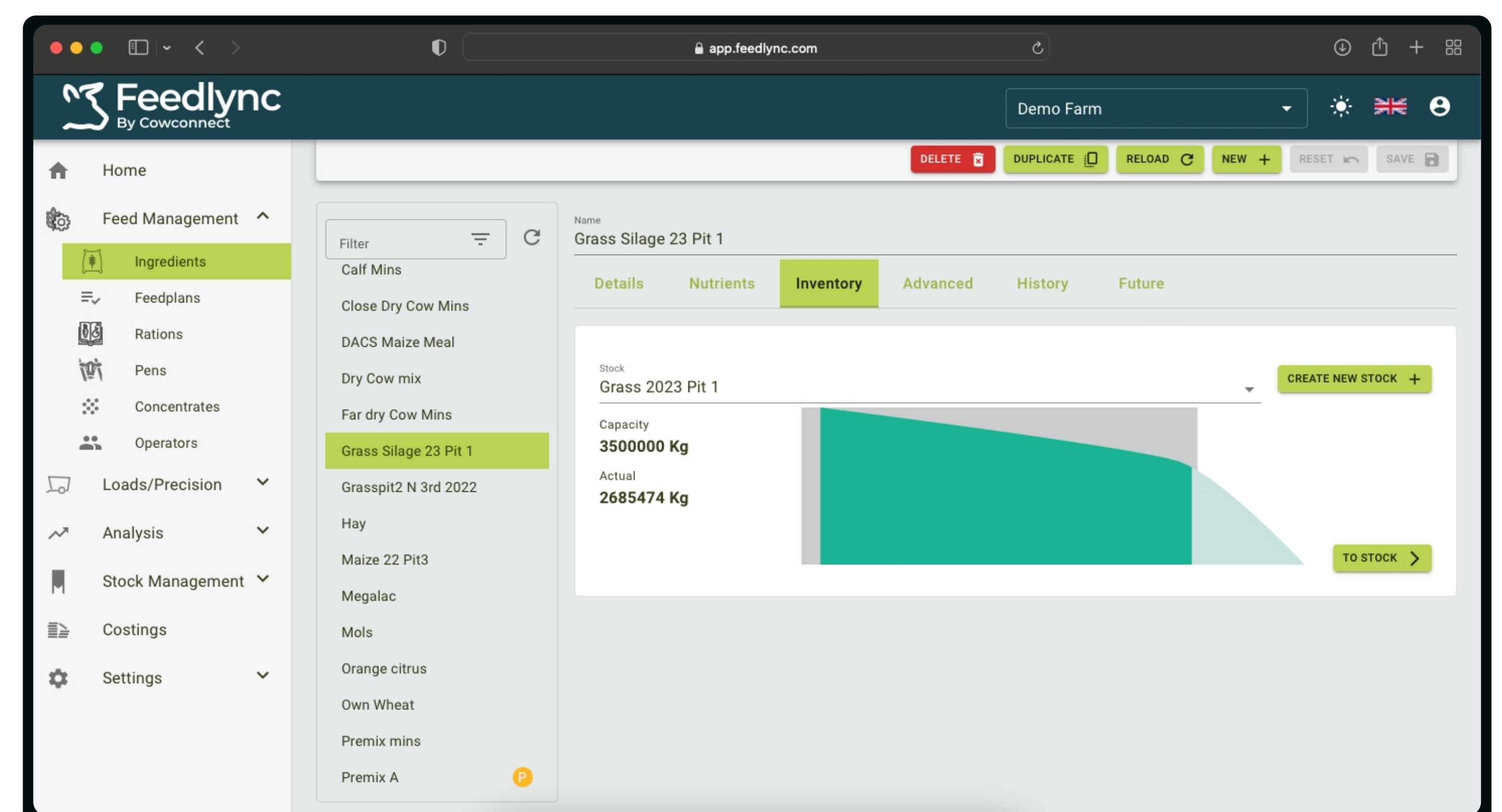
2. Inventory

Then fill out the rest of the required fields:

Ingredient-type,

Ingredient sub-type,

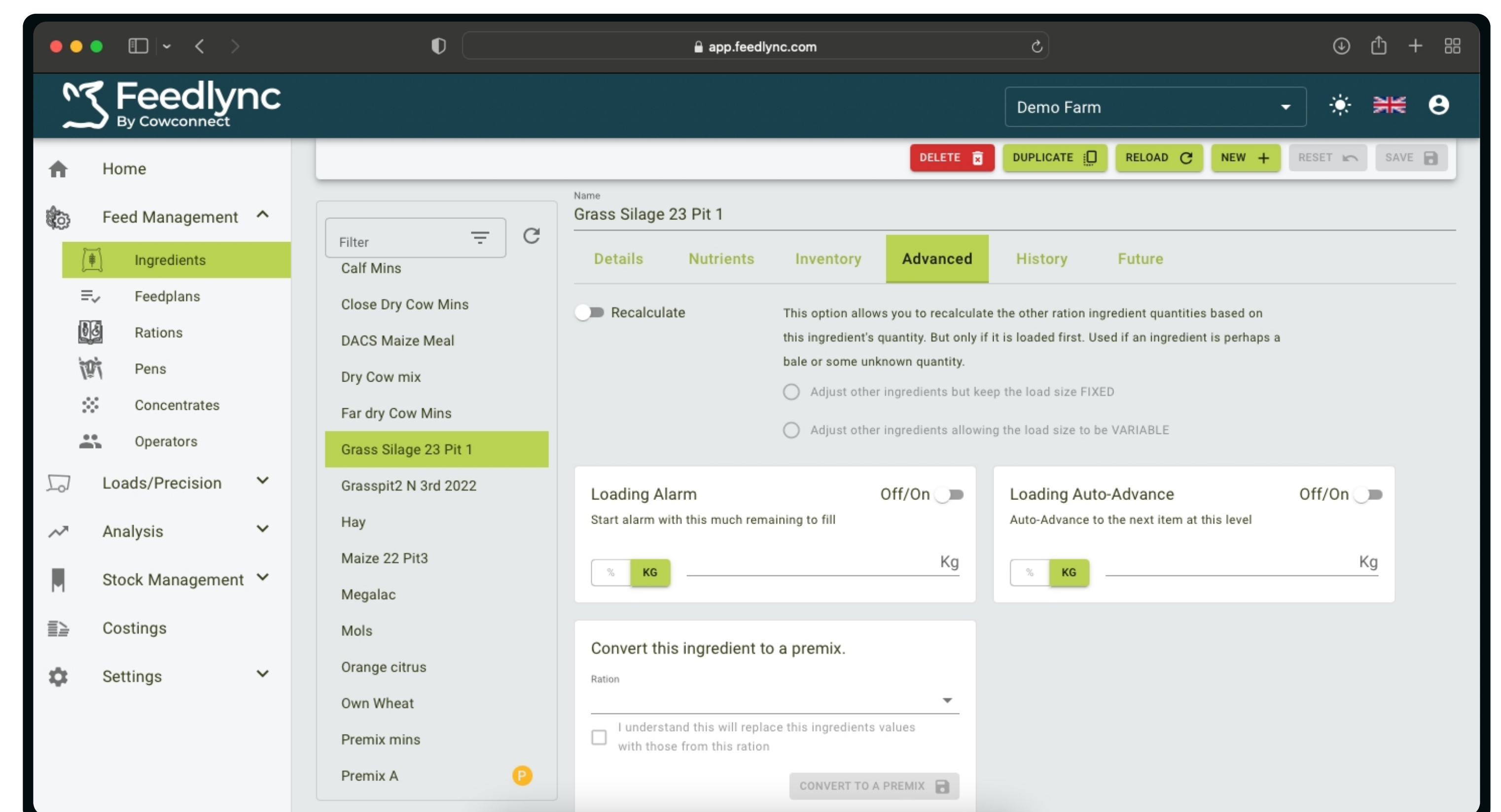
Dry-matter.



3. Advanced

create the ingredient by clicking Save

in the upper right corner.



Contact

www.feedlync.com

support@feedlync.com

US (+1) 414 939 6871

UK (+44) 20 3966 90 63

DK (+45) 32 25 89 56