

Retrofit an Antenna for better Coverage

Step 1

With a flat screwdriver open the front of the gateway by carefully pushing into both small slits at the front.

Note! The lit cannot be remove far away from the gateway due to cables but must be placed right next to the gateway, as you can see on the next picture.



CowConnect Contact Details:

www.cowconnect.net

sales@cowconnect.net

+45 30 74 00 50

How to...

Step 2

Image 1: With a plier the small cable can be dismantled.

Image 2: The small cable should be fixed to the lit with tape. Note! In case the extra antenna will not be needed anymore, the pig tale can be put back and should therefore not be cut off.

Image 1

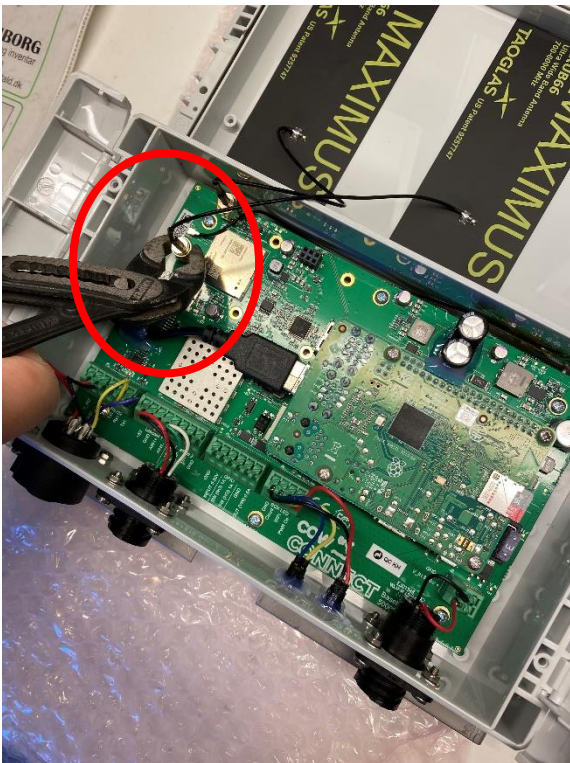


Image 2



CowConnect Contact Details:

www.cowconnect.net

sales@cowconnect.net

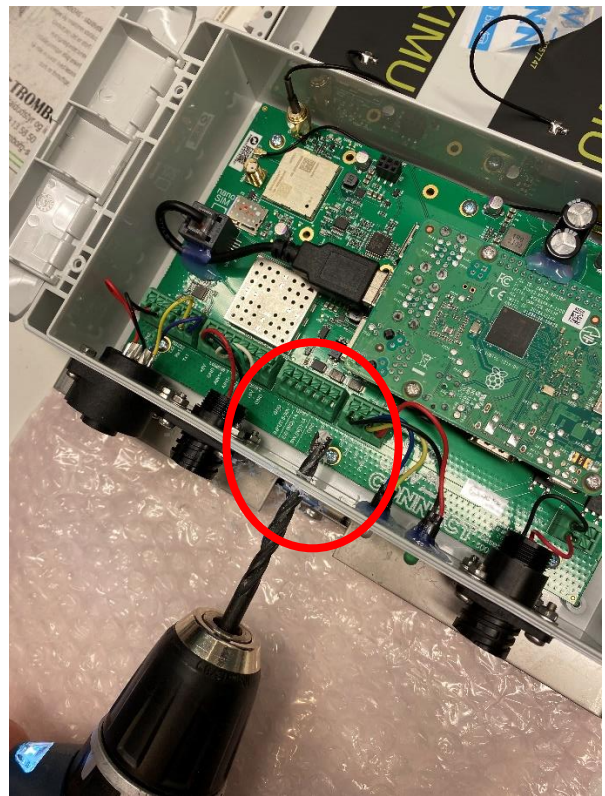
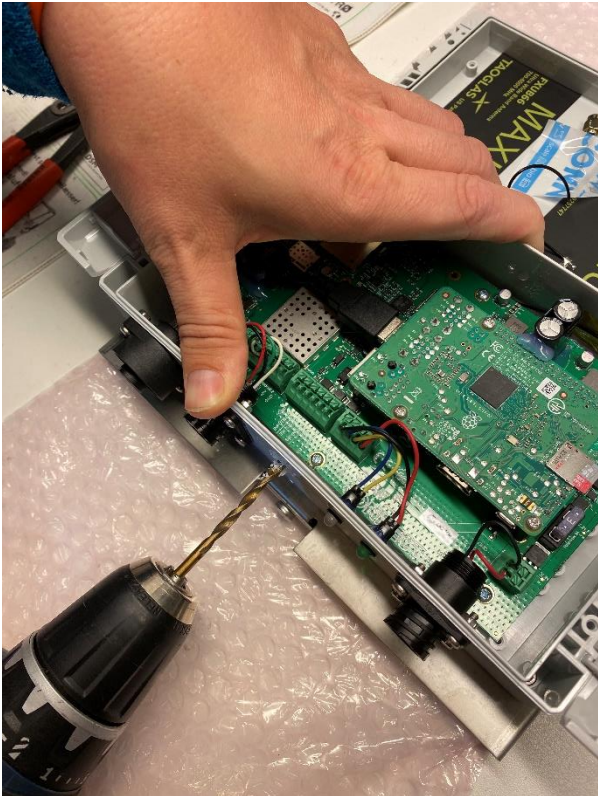
+45 30 74 00 50

How to...

Step 3

With a 6 mm small drill you can drill a hole into the bottom of the gateway.

This needs to be done slow and steady to make sure nothing inside the gateway gets damaged.



CowConnect Contact Details:

www.cowconnect.net

sales@cowconnect.net

+45 30 74 00 50

How to...

Step 4

Image 1: Now you can mount the pig tale that came with the extra antenna. The slim end should be placed INSIDE the gateway.

Image 2: The other end of the pig tale can be mounted where you dismantled the other pig tale.

Image 1

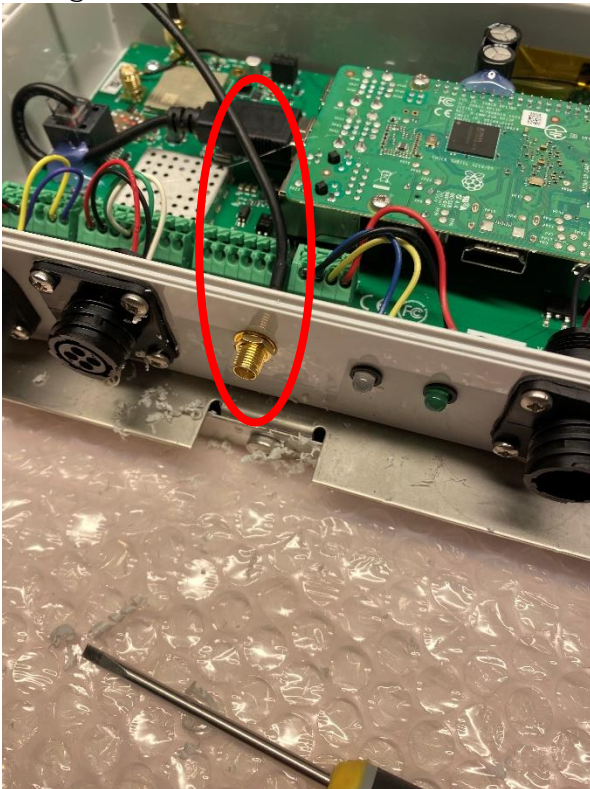
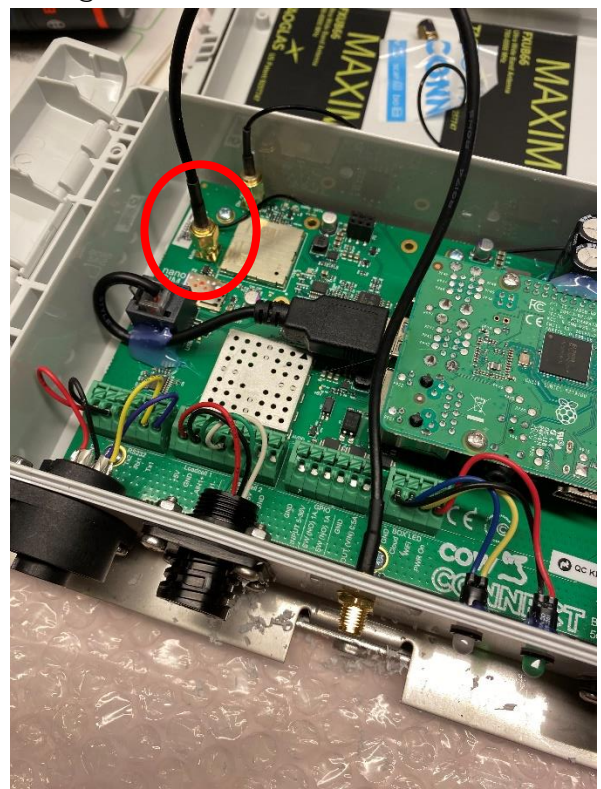


Image 2



CowConnect Contact Details:

www.cowconnect.net

sales@cowconnect.net

+45 30 74 00 50

How to...



Step 5

Now you can screw the antenna onto the gateway from the outside. The antenna itself can be mounted as you wish.



CowConnect Contact Details:

www.cowconnect.net

sales@cowconnect.net

+45 30 74 00 50